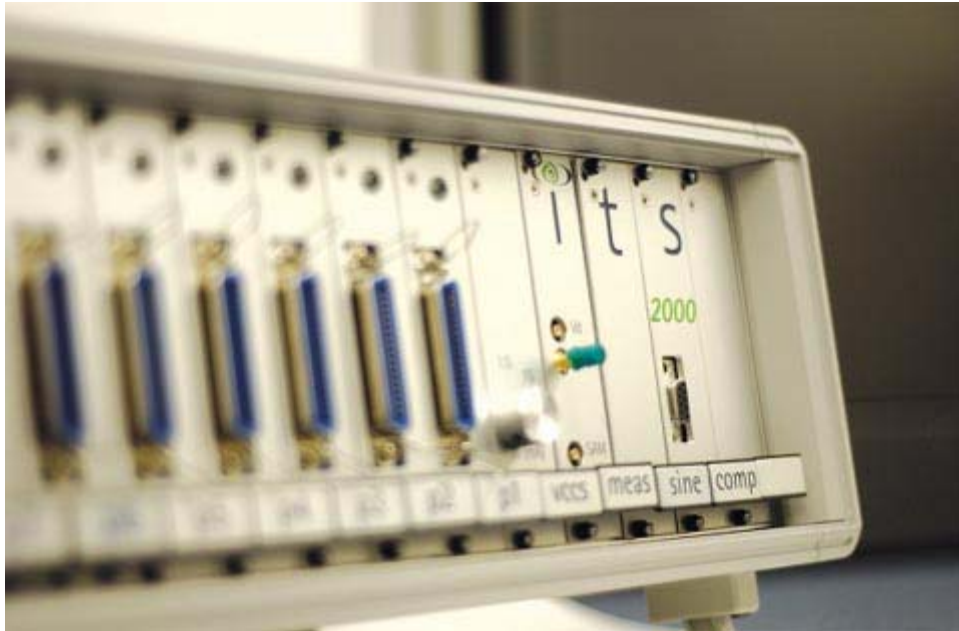




# ITS

SEE INSIDE YOUR PROCESS



## Products and Services – Instruments

### 2000 resistance tomography instrument

- the instrument can be provided in 2 sizes - compact (for 1 or two planes) and full (expandable up to 8 planes).

Units can be supplied as rack mounted to be fitted in cabinets or enclosures or as free standing units for laboratory use.



ITS equipment is designed to rapidly measure electrical parameters - in particular electrical resistance and / or capacitance - so that these measurements can be combined for tomographic analysis. Typical data collection speeds are in excess of 30 frames per second for a 16 electrode configuration, More detailed specifications are available on request



# ITS

*SEE INSIDE YOUR PROCESS*



The instrument can also be supplied as a rack mounted unit.

In addition, the following hardware modules are also available:

- Low conductivity adaptor (for operation in polar organic solvents)
- High conductivity adaptor (for operation in highly conductive regimes, such as strong acids or bases)
- Enclosures to IP57
- Control module, providing a 4-20mA output of key outputs
- "Intrinsically safe module certified to EEx ia II C T6. available to operate linear and circular tomography systems in a hazardous environment.